



ISSUE 7

THE ROTORUA & DISTRICT PRINCIPALS' ASSOCIATION NEWSLETTER

INSIDE THIS ISSUE:

SCHOOL/COMMUNITY/RPA EVENTS P2

DATES FOR YOUR DIARY P2

LEAVERS/STARTERS P3

ANNOUCEMENTS P3

ROTORUA INTER-MEDIATE P4

ROTORUA EDUCATION CENTRE P4

R.E.L.L.CO & B.E.S.T GET YOUR REGISTRATIONS IN TODAY—ONLY A WEEK TO GO

SATURDAY 1ST MAY

LYNMORE PRIMARY SCHOOL

30 BREAK-OUTS/WORKSHOPS TO CHOOSE FROM
2 KEYNOTES, 2 BREAK-OUTS, 1 WORKSHOP

MORNING TEA & LUNCH

ONLY \$95 PER PERSON OR \$75 IF MORE THAN 5
REGISTRATIONS FROM ONE SCHOOL

<http://rellco.wikispaces.com/RegisterHere>

WHO'S ON THE EXEC BOARD

- Colin Watkins
- Roger Dempster
- Tony Pope
- Andrew Sinclair
- Bob Stiles
- Deb Epp
- Garry De Thierry
- Linda Woon
- Warwick Moyle

OUR GOLD SPONSORS



Total Education Solutions Ltd.

www.totaleducation.co.nz

SCHOOL/COMMUNITY/RPA EVENTS

- **Kaharoa School Rural Schools Cross Country** - Kaharoa School is holding its annual rural schools interschool cross country on Friday 18th June 2010. All rural schools and our other regular attendees are most welcome. This event can be used as a warm up to the Intermediate Schools Cross Country on 29th June. For further information email principal@kaharoa.school.nz
- **Kaharoa School Auction & Fair 2010** - 16th May (come Rain or Shine)
Auction: Farm Equipment, Household goods & Services
Wonderful café food, BBQ and ice-cream
Bouncy castle, fun country games and pony rides
Something fun for all to enjoy
Kaharoa school would be most grateful if schools could promote this.
- **Kaharoa School Art Week Display** - Opens in our Kokako Centre on the evening of Tuesday 29th June 2010. Visitors most welcome to attend the opening or to visit on Wednesday 30th June or the morning of Thursday 1st July.
- **Upper Atiamuri School** - The big project for Upper Atiamuri School this term is our production of "Marz", a musical, which will be performed on 23rd & 24th June at our local hall. For further details and an invitation to a matinee performance for other schools will come out to you closer to the time. There's only 41 of us so we're all involved. Should be good!

DATES FOR YOUR DIARY.....

- **30th April** - RPA AGM Meeting
- **16th May** - Kaharoa School Auction & Fair
- **18th June** - Kaharoa School Rural Schools Cross Country
- **23rd & 24th June** - Upper Atiamuri School Production of "Marz"
- **29th June** - Kaharoa School Art Week Display



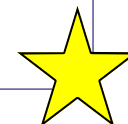
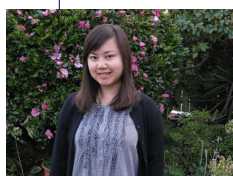
LEAVERS/STARTERS

- We say goodbye to **Melanie Taylor** of Rotokawa Primary School and a big welcome to **Briar Stewart** who has taken her place. You will be able to meet Briar at the AGM on Friday 30th April :)
- Welcome to **Sherie Collins** who has officially been made Principal of Kea Street Special School.



ANNOUNCEMENTS

- **Boxing Bob Stiles** - Congratulations to Bob for not only being brave enough to enter the boxing ring on April 11th, but also for winning his bout.
- **Roots of Empathy Programme** - I am delighted to announce that the Roots of Empathy programme has commenced in Rotorua. Five schools, Horohoro, Kaitao Middle, Kaharoa, Malfroy and Selwyn in partnership with Barnardoes are making a difference to our world (for the better) one child at a time. This structured and well resourced programme involves bringing a mother and her under 12 month old baby into a classroom with a trained instructor 9 times a year. The research is showing the programme is making significant difference in schools as children learn social and emotional literacy through gaining an understanding of caring for a baby and a baby's development. Thank you to the Rotorua Trust for supporting this initiative. We see huge benefits for Rotorua children, families, schools and our community and we are keen to grow this programme. If any schools would like to register their interest for next year, find out more or observe the programme in action, please email principal@kaharoa.school.nz
 - **Yuan Meng** - Yuan is a Chinese intern from Shanghai. Yuan is working in 7 different schools in Rotorua, assisting us with our Chinese Language Programmes. She will be here until December and we hope that people will invite her to join trips and events so that she can experience as much of Rotorua and NZ as possible. Last term she had a month at Otonga School. This term she is working at Kaitao, and then Rotorua Intermediate.



ROTORUA INTERMEDIATE

What is it about Rotorua Intermediate that makes the students excel?

The Media Team at Rotorua Intermediate is a group of students who are interested in learning about current events and also want to develop their writing skills. They were curious to find out what it is about the school that makes it so special for the students. Every day they see children who are buzzing with energy and enthusiasm so the Media Team set out to discover what it is about RIS that makes it such an exciting place to come to every day. They interviewed a range of their peers and asked for their opinions.

Here are some of the responses they got...

The teachers are really great and expect a lot.

There are more challenging opportunities, e.g. Aims sport, learning new languages, student engagement, inquiry learning.

There are a lot of out of class opportunities which challenge us because we wouldn't normally have the chance to do them, e.g. Tech, Environmental Group, Band, Choir, Rock Band.

We're expected to go from good to great at all times.

The teachers find out what we're not good at and focus on it.

We have a lot of support to keep us working and striving to be the best we can be.

Not everything is easy.

The teachers push us until we succeed.

The principal expects us to sweat our socks off to meet the challenges that the teachers give us.

We can have fun but work hard when we are expected to.

The Media Team agreed with all of these comments and added that there are so many opportunities to try new things, take on responsibilities and learn about new things that every day is an adventure!

THE RPA NEWSLETTER IS PUBLISHED BY THE:

ROTORUA EDUCATION CENTRE

The Rotorua Education Centre is an initiative of the Rotorua Energy Charitable Trust and the Rotorua Principals' Association to develop educational initiatives in local schools. The Ed Centre provides a range of services to teachers in the Rotorua District.

ROTORUA EDUCATION CENTRE

114 Sunset Road
PO Box 784
Rotorua

Serena Kitchener, Executive Officer
Lucy Hazelwood, Technician
Phone: 07 349 6070
Fax: 07 349 6076
Mobile: 027 225 7275 (Serena)
Mobile: 027 210 4616 (Lucy)



- CONFERENCE FACILITIES
- COMPUTER SUITE
- VIDEO CONFERENCING



- LOAN EQUIPMENT
- TECHNICAL SUPPORT

www.rpa.school.nz

www.rotorua.school.nz